



NYU

**TANDON SCHOOL
OF ENGINEERING**

Report on

Enrollment & Retention

Based on Official Data
for
Spring 2022

Prepared by the
Office of Assessment and Institutional Research

February 13, 2022

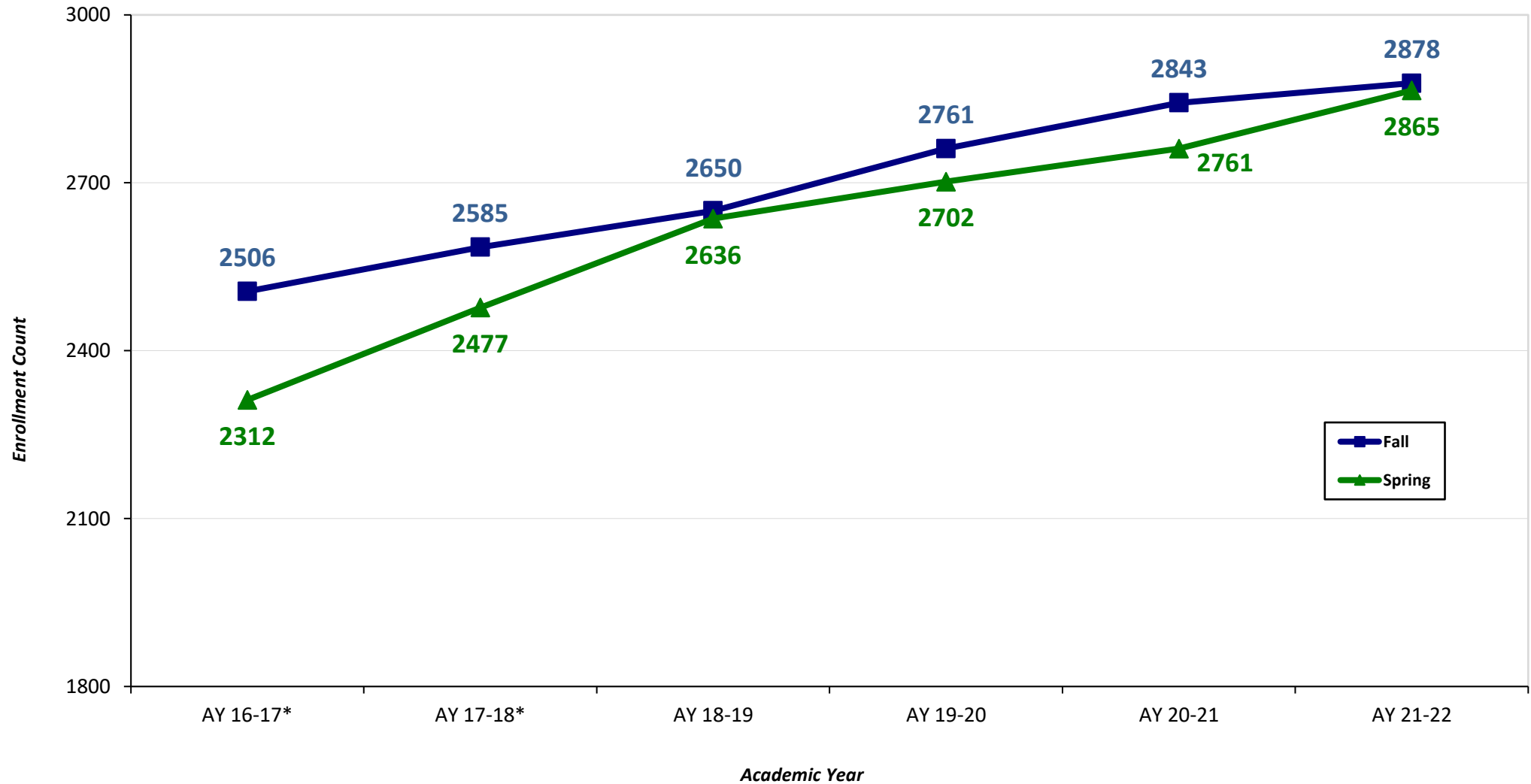


Table of Contents

	<u>Page(s)</u>
Undergraduate Enrollment	1
Undergraduate Enrollment by Gender	2
Graduate Enrollment	3
Graduate Enrollment by Gender	4
Total School Enrollment	5
Total School Enrollment by Gender.....	6
Fall to Spring Undergraduate Retention Rates.....	7
Fall to Spring Undergraduate Retention Rates by Gender.....	8
Fall to Spring Graduate Retention Rates.....	9
Fall to Spring Graduate Retention Rates by Gender.....	10
Spring Registration Summary - Undergraduate	11
Spring Registration Summary - Graduate	12
Spring Registration Summary - Others	13
Spring Undergraduate Enrollment Comparison	14
Spring Graduate Enrollment Comparison	15
Glossary : https://engineering.nyu.edu/about/assessment-and-institutional-research/subjects-degree-level	

Undergraduate Enrollment

(Official, February 13, 2022)

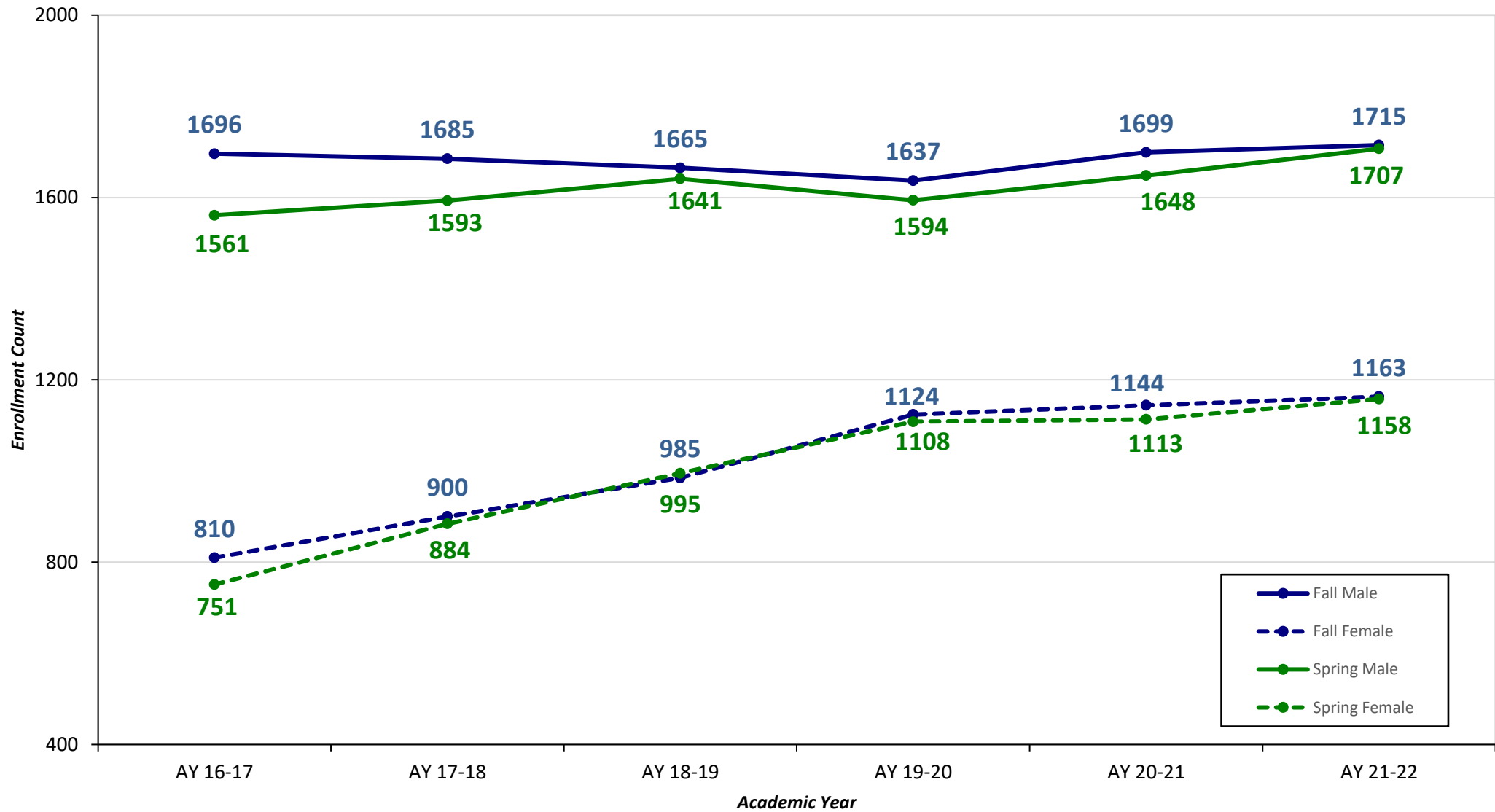


	AY 16-17*	AY 17-18*	AY 18-19	AY 19-20	AY 20-21	AY 21-22
Fall	2506	2585	2650	2761	2843	2878
Spring	2312	2477	2636	2702	2761	2865
% Drop F-S	-7.7%	-4.2%	-0.5%	-2.1%	-2.9%	-0.5%

* University Visitors are included in the overall Undergraduate Enrollment Headcount

Undergraduate Enrollment by Gender

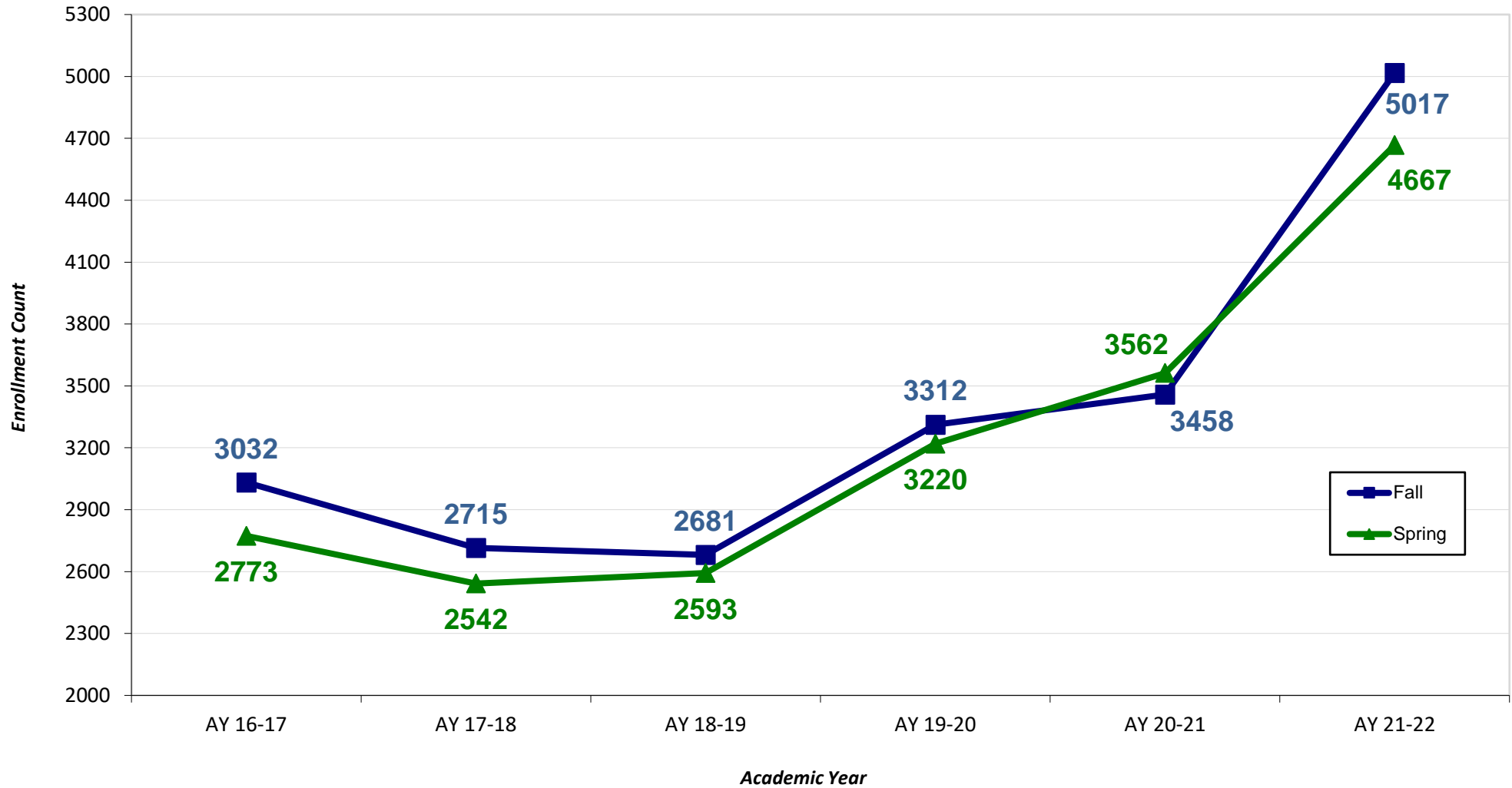
(Official, February 13, 2022)



Term-Gender	AY 16-17	AY 17-18	AY 18-19	AY 19-20	AY 20-21	AY 21-22
Fall Males	1696	1685	1665	1637	1699	1715
Fall Females	810	900	985	1124	1144	1163
Spring Males	1561	1593	1641	1594	1648	1707
Spring Females	751	884	995	1108	1113	1158

Graduate Enrollment

(Official, February 13, 2022)

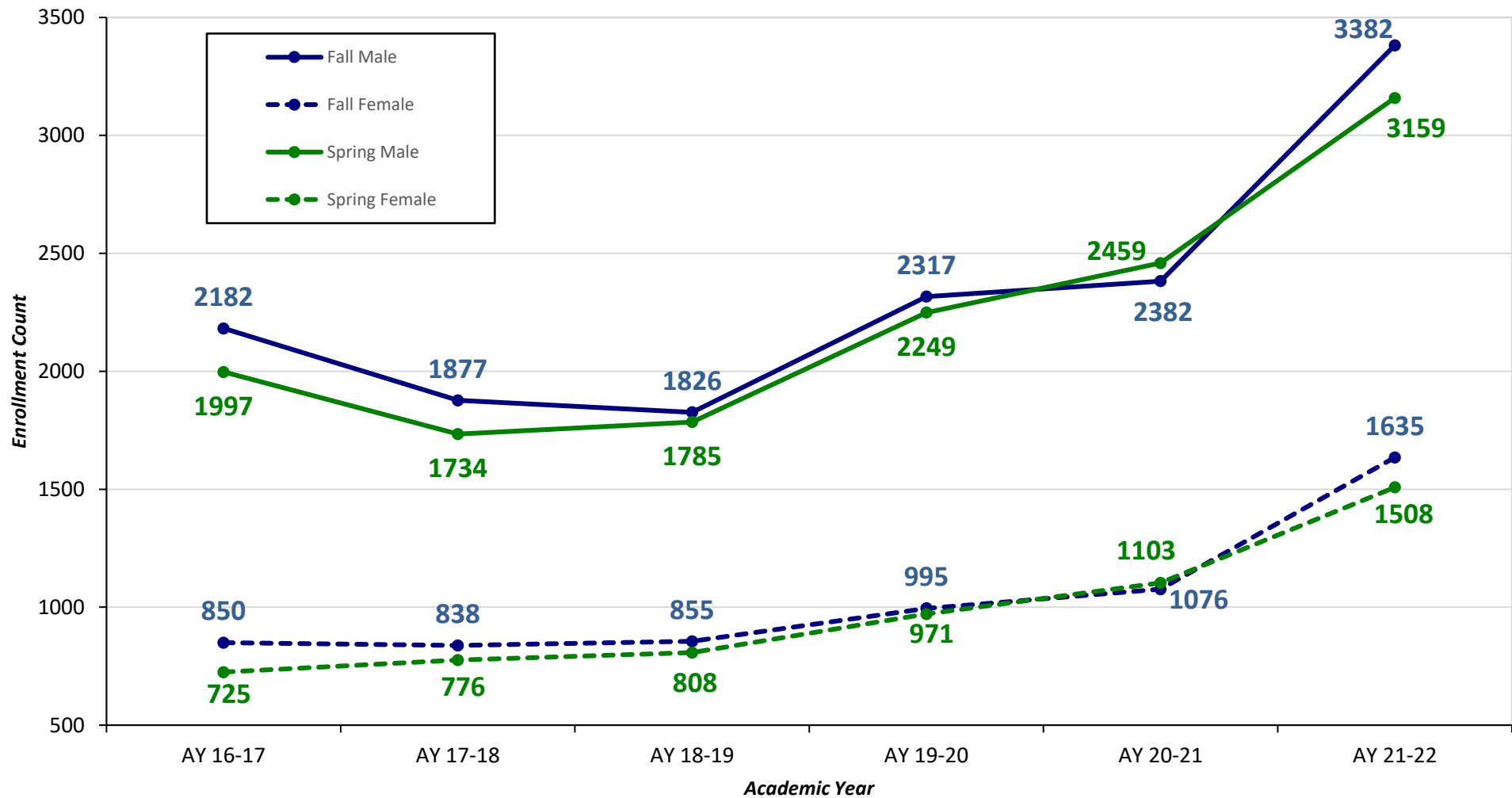


	AY 16-17	AY 17-18	AY 18-19	AY 19-20	AY 20-21	AY 21-22
Fall	3032	2715	2681	3312	3458	5017
Spring	2773	2542	2593	3220	3562	4667

[BACK TO INDEX](#)

Graduate Enrollment by Gender

(Official, February 13, 2022)

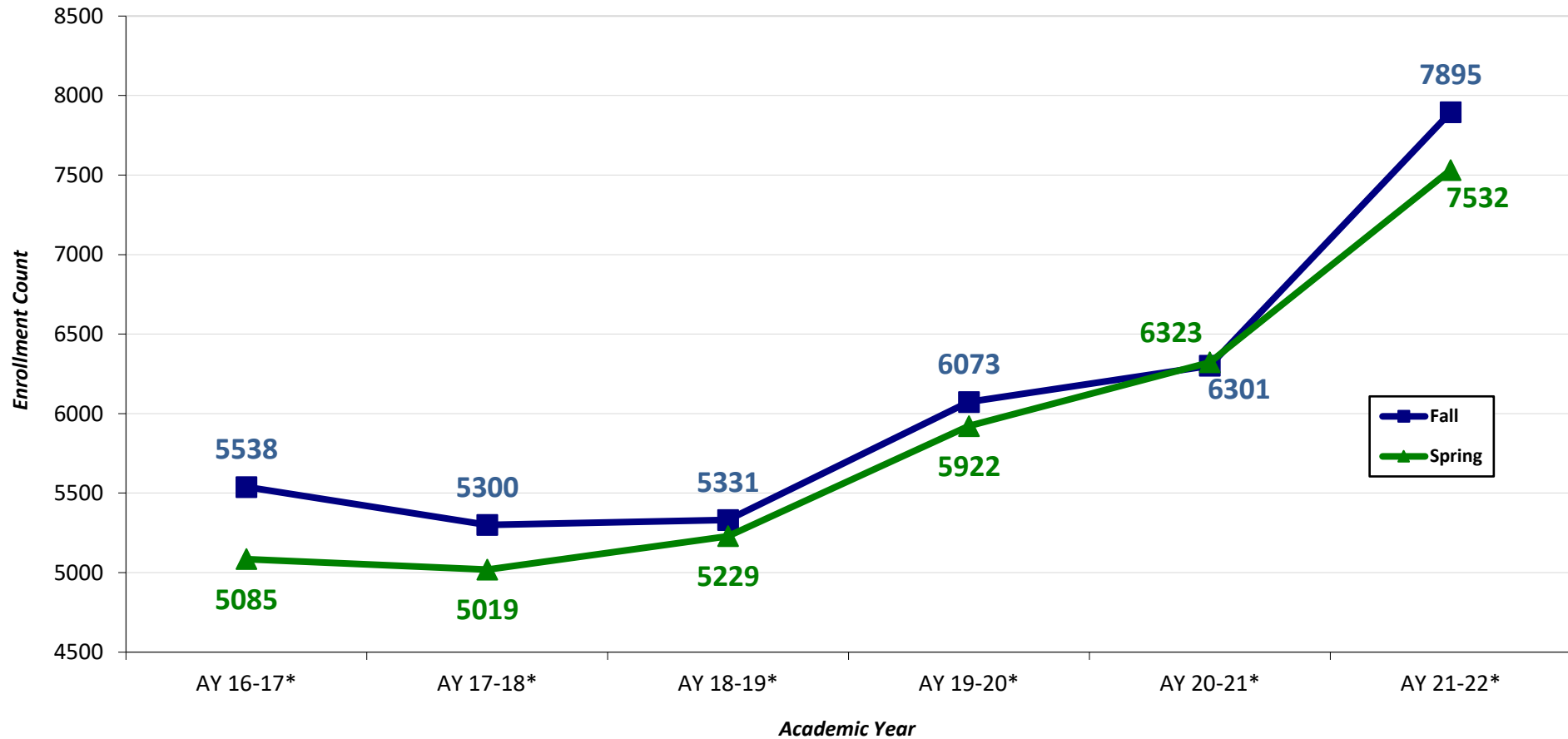


Term-Gender	AY 16-17	AY 17-18	AY 18-19	AY 19-20	AY 20-21	AY 21-22
Fall Males	2182	1877	1826	2317	2382	3382
Fall Females	850	838	855	995	1076	1635
Spring Males	1997	1734	1785	2249	2459	3159
Spring Females	725	776	808	971	1103	1508

[BACK TO INDEX](#)

Total School Enrollment

(Official, February 13, 2022)

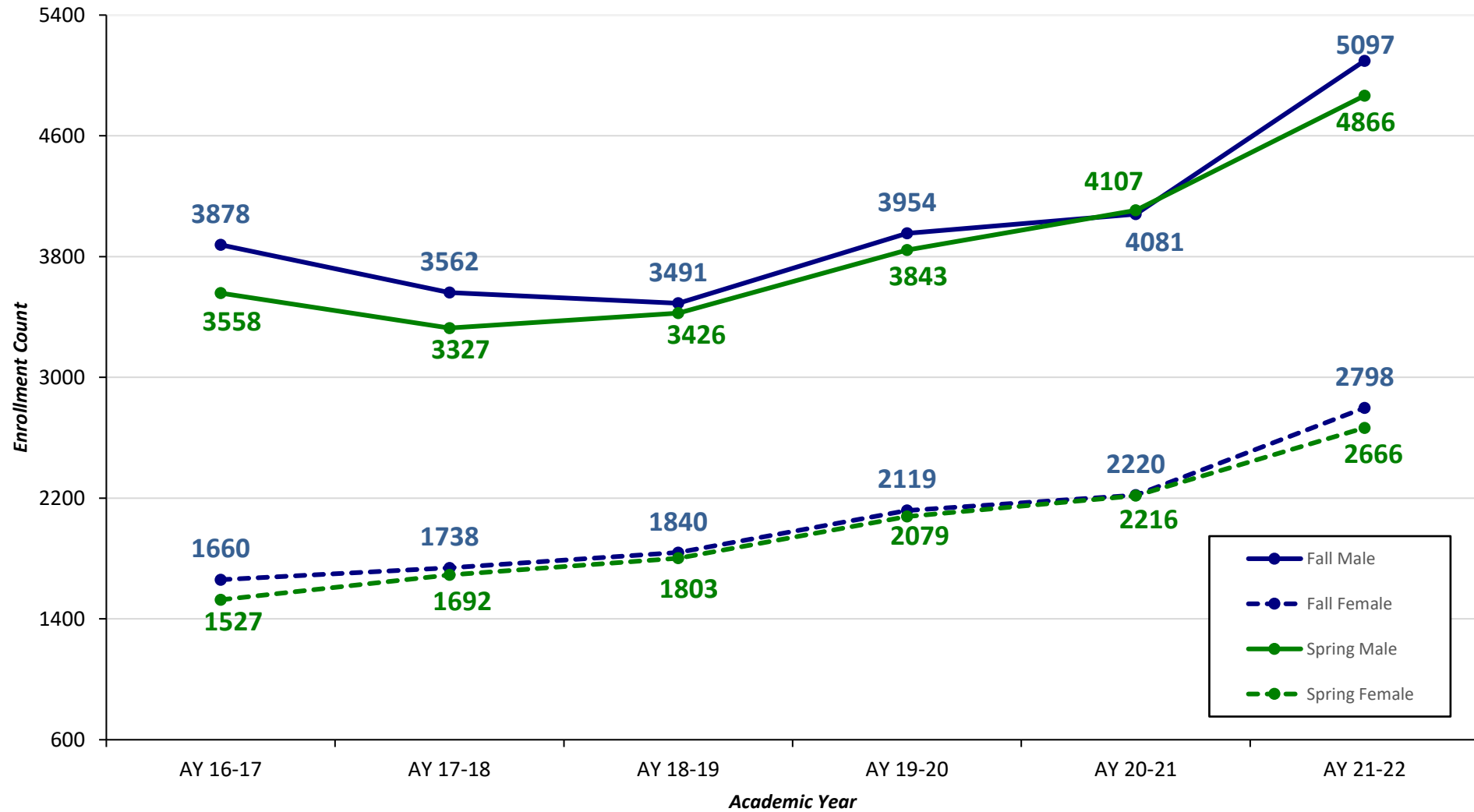


	AY 16-17*	AY 17-18*	AY 18-19*	AY 19-20*	AY 20-21*	AY 21-22*
Fall	5538	5300	5331	6073	6301	7895
Spring	5085	5019	5229	5922	6323	7532
% Drop F-S	-8.2%	-5.3%	-1.9%	-2.5%	0.3%	-4.6%

* University Visitors are included in the overall Undergraduate Enrollment Headcount

Total School Enrollment by Gender

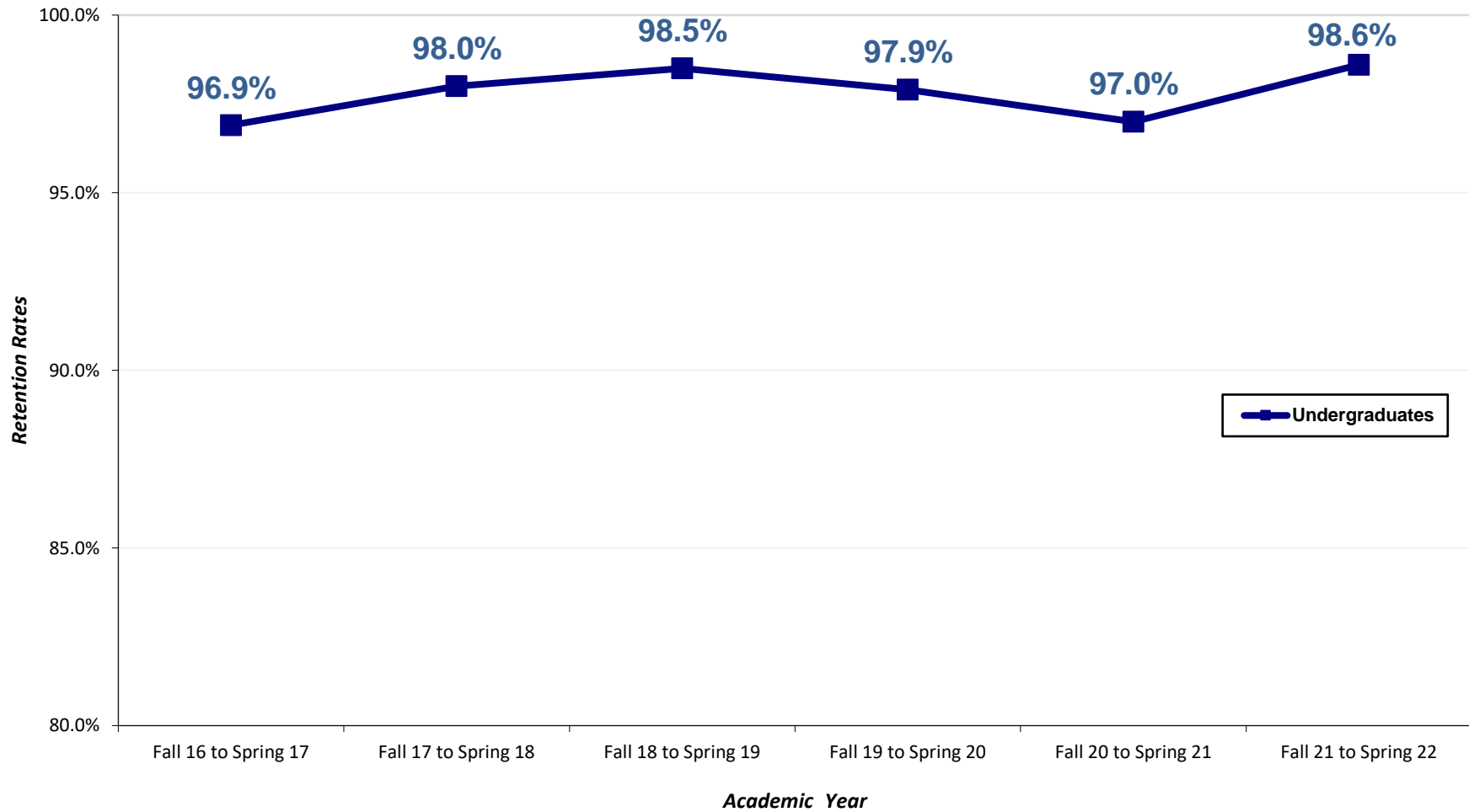
(Official, February 13, 2022)



Term-Gender	AY 16-17	AY 17-18	AY 18-19	AY 19-20	AY 20-21	AY 21-22
Fall Males	3878	3562	3491	3954	4081	5097
Fall Females	1660	1738	1840	2119	2220	2798
Spring Males	3558	3327	3426	3843	4107	4866
Spring Females	1527	1692	1803	2079	2216	2666

Fall to Spring Undergraduate Retention Rates

(Official, February 13, 2022)

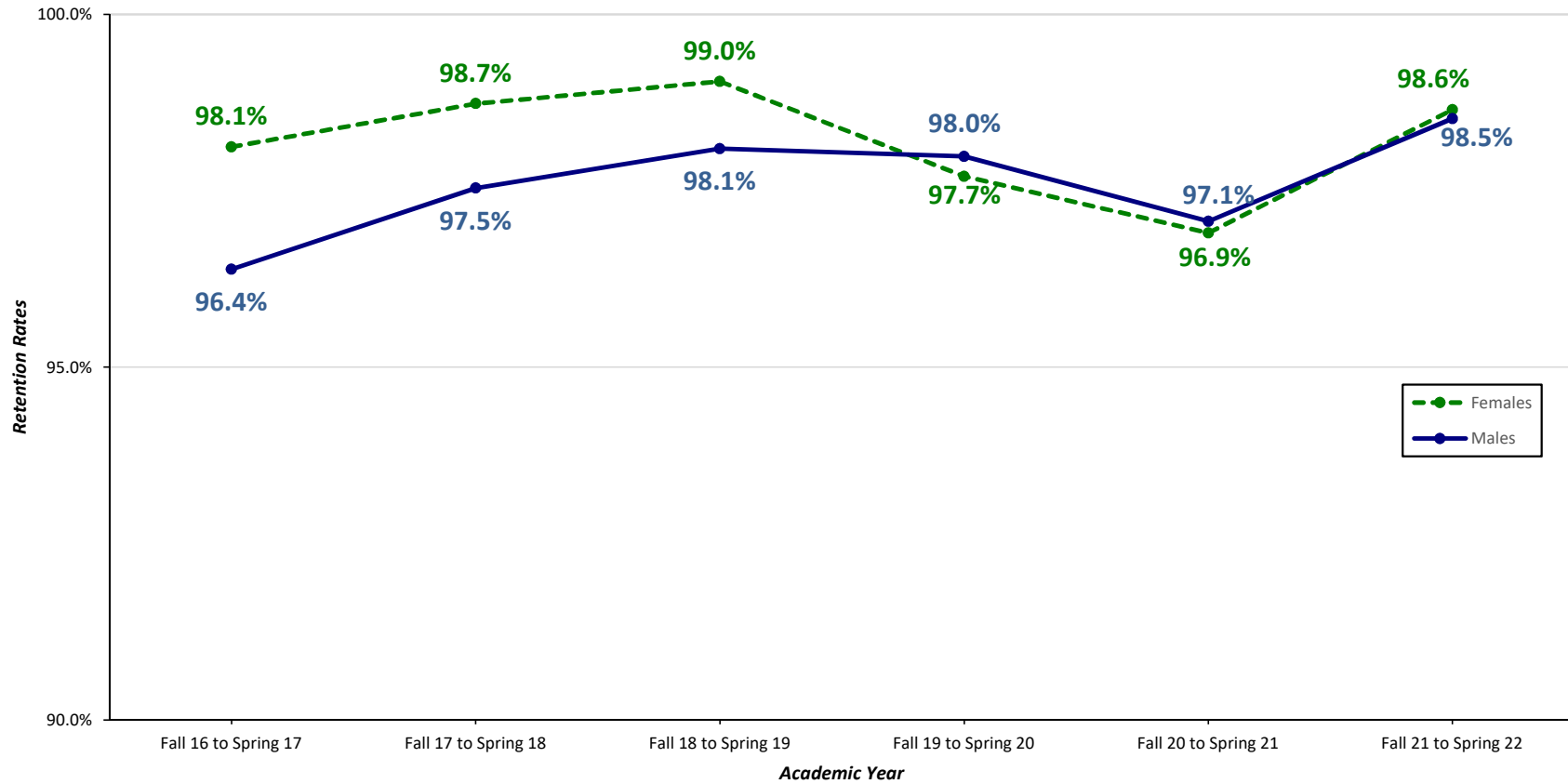


Official Stats	Fall 16 to Spring 17	Fall 17 to Spring 18	Fall 18 to Spring 19	Fall 19 to Spring 20	Fall 20 to Spring 21	Fall 21 to Spring 22
Undergraduates	96.9%	98.0%	98.5%	97.9%	97.0%	98.6%

[← BACK TO INDEX](#)

Fall to Spring Undergraduate Retention Rates by Gender

(Official, February 13, 2022)

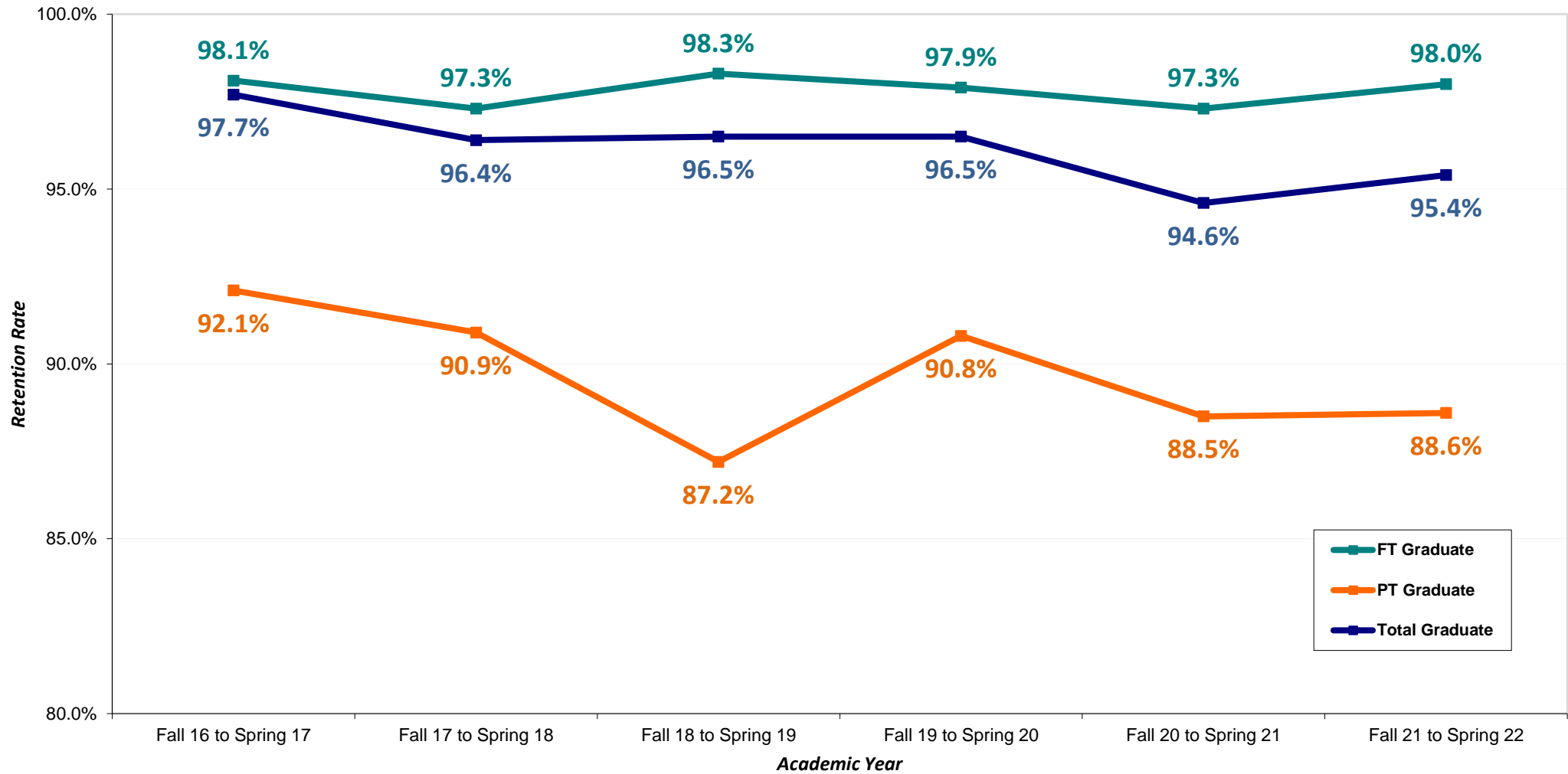


Official Stats		Fall 16 to Spring 17	Fall 17 to Spring 18	Fall 18 to Spring 19	Fall 19 to Spring 20	Fall 20 to Spring 21	Fall 21 to Spring 22
Spring Returning	Females	98.1%	98.7%	99.0%	97.7%	96.9%	98.6%
	Males	96.4%	97.5%	98.1%	98.0%	97.1%	98.5%

Calculations		Fall 16 to Spring 17	Fall 17 to Spring 18	Fall 18 to Spring 19	Fall 19 to Spring 20	Fall 20 to Spring 21	Fall 21 to Spring 22
Spring Returning	Females	732	859	938	1064	1064	1095
	Males	1521	1545	1545	1510	1555	1602
Fall	Total Females	746	870	947	1089	1098	1110
	Total Males	1578	1584	1575	1541	1602	1626

Fall to Spring Graduate Retention Rates

(Official, February 13, 2022)

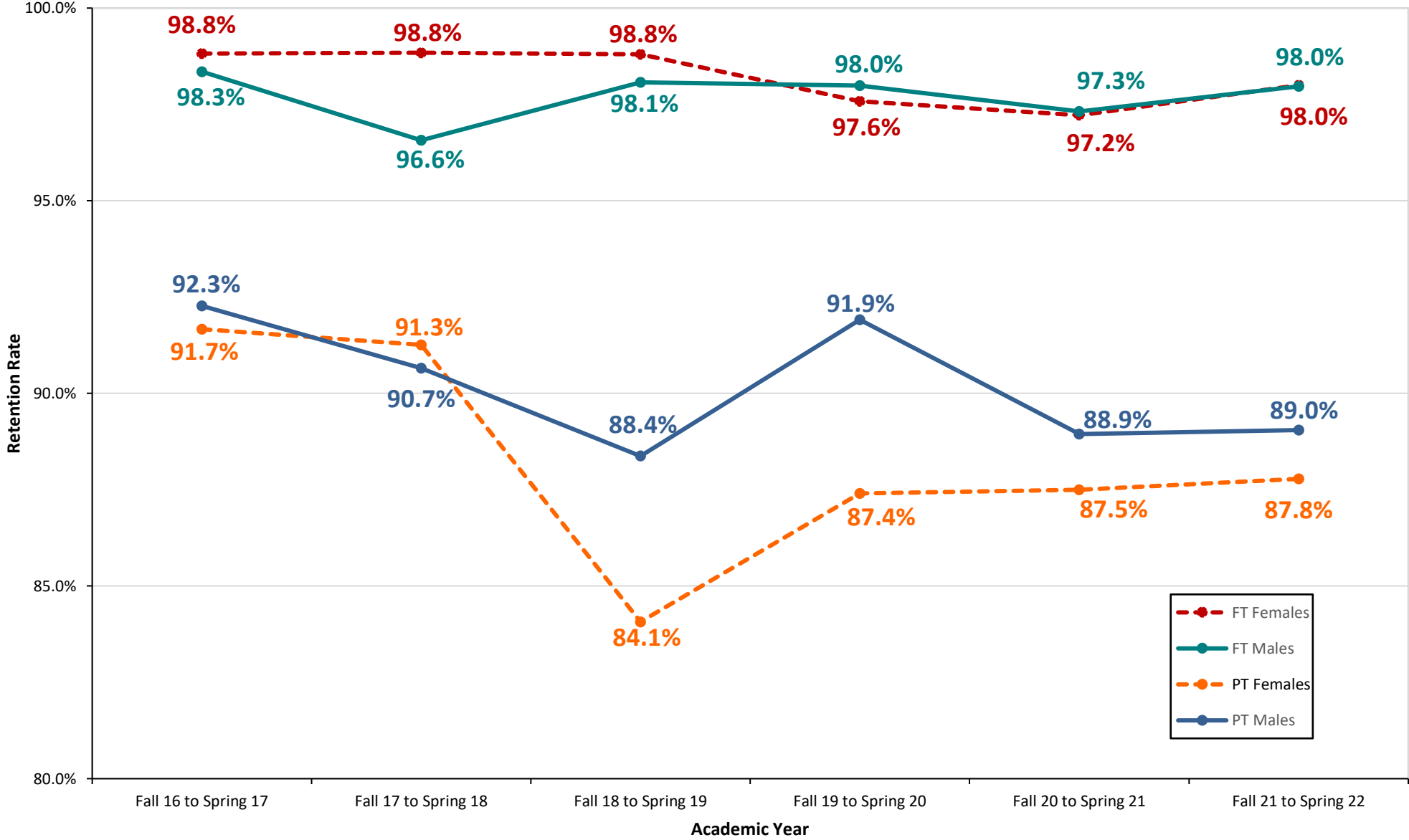


Official Stats	Fall 16 to Spring 17	Fall 17 to Spring 18	Fall 18 to Spring 19	Fall 19 to Spring 20	Fall 20 to Spring 21	Fall 21 to Spring 22
FT Graduate	98.1%	97.3%	98.3%	97.9%	97.3%	98.0%
PT Graduate	92.1%	90.9%	87.2%	90.8%	88.5%	88.6%
Total Graduate	97.7%	96.4%	96.5%	96.5%	94.6%	95.4%

Note: Excludes Doctoral Students

Fall to Spring Graduate Retention Rates by Gender

(Official, February 13, 2022)



Official Stats		Fall 16 to Spring 17	Fall 17 to Spring 18	Fall 18 to Spring 19	Fall 19 to Spring 20	Fall 20 to Spring 21	Fall 21 to Spring 22
Spring Returning	FT Females	98.8%	98.8%	98.8%	97.6%	97.2%	98.0%
	FT Males	98.3%	96.6%	98.1%	98.0%	97.3%	98.0%
	PT Females	91.7%	91.3%	84.1%	87.4%	87.5%	87.8%
	PT Males	92.3%	90.7%	88.4%	91.9%	88.9%	89.0%

Calculations		Fall 16 to Spring 17	Fall 17 to Spring 18	Fall 18 to Spring 19	Fall 19 to Spring 20	Fall 20 to Spring 21	Fall 21 to Spring 22
Spring Returning	FT Females	584	597	660	766	629	1027
	FT Males	1490	1210	1374	1702	1233	1977
	PT Females	88	94	95	118	217	316
	PT Males	191	194	266	375	523	707
Fall	Total FT Females	591	604	668	785	647	1048
	Total FT Males	1515	1253	1401	1737	1267	2018
	Total PT Females	96	103	113	135	248	360
	Total PT Males	207	214	301	408	588	794

Note: Excludes Doctoral Students



Spring 2022 Headcount Report
as of Census Day (02-13-22)

Undergraduate

				Spring 2021	Spring 2022	% Change
				as of	as of	Since Last
				2/17/2021	2/13/2022	Year
Brooklyn	Continuing	Regular	Full-time	2533	2593	2.4%
			Part-time	120	130	8.3%
		Readmits	Full-time	3	4	33.3%
			Part-time	5	2	-60.0%
	New	Freshmen	Full-time	48	68	41.7%
			Part-time			NA
		Transfers	Full-time	42	50	19.0%
			Part-time	4	6	50.0%
		Inter-School Transfers	Full-time	6	12	100.0%
			Part-time			NA
		Quick Admits (3+2 Program)	Full-time			NA
			Part-time			NA
Totals (Tandon School of Engineering)						
Total	CON	Full-time	2536	2597	2.4%	
		Part-time	125	132	5.6%	
	NEW	Full-time	96	130	35.4%	
		Part-time	4	6	50.0%	
	Total	Full-Time	2632	2727	3.6%	
		Part-Time	129	138	7.0%	
	Total	CON	2661	2729	2.6%	
		NEW	100	136	36.0%	
Grand Total (Tandon School of Engineering)				2761	2865	3.8%



Spring 2022 Headcount Report
as of Census Day (02-13-22)

Graduate

			Spring 2021	Spring 2022	% Change		
			as of	as of	Since Last		
			2/17/2021	2/13/2022	Year		
Brooklyn	Continuing	Regular	Full-time	1317	2781	111.2%	
			Part-time	1092	808	-26.0%	
		Readmits	Full-time	1		-100.0%	
			Part-time			NA	
	New	Regular	Full-time	329	107	-67.5%	
			Part-time	47	25	-46.8%	
		Visitors	Full-time			NA	
			Part-time	43	8	-81.4%	
	Tandon Online and Enterprise Learning	Continuing	Regular	Full-time	8	29	262.5%
			Part-time	551	794	44.1%	
New		Regular	Full-time	8	7	-12.5%	
		Part-time	166	108	-34.9%		
Totals		Total	Continuing	Full-time	1326	2810	111.9%
			Part-time	1643	1602	-2.5%	
	NEW	Full-time	337	114	-66.2%		
		Part-time	256	141	-44.9%		
	Total	Full-time	1663	2924	75.8%		
		Part-time	1899	1743	-8.2%		
	Total	Continuing	2969	4412	48.6%		
	New	593	255	-57.0%			
Grand Total			3562	4667	31.0%		



**Spring 2022 Headcount Report
as of Census Day (2/13/2022)**

NYU School of Engineering - All Graduates

	FT	PT	Total
NYU Tandon & Law MS Total	38		38
NYU Tandon Total	2924	1743	4667
School of Engineering Graduate Total	2962	1743	4705

NYU School of Engineering - Undergraduate Degree Seeking

	FT	PT	Total
Abu Dhabi Engineering	165	2	167
NYU Shanghai Engineering*	182	3	185
NYU Tandon	2727	138	2865
School of Engineering Undergraduate Degree Seeking Total	3074	143	3217

NYU School of Engineering - Overall

	FT	PT	Total
School of Engineering Overall Total	6036	1886	7922

* NYU Shanghai Engineering includes Computer Science



NYU Tandon Spring Undergraduate Enrollment Comparison as of February 13, 2022

Major	Academic Load	Spring 2021 2/17/2021			Spring 2022 2/13/2022			% Change		
		CON	NEW	Grand Total	CON	NEW	Grand Total	% Change in Continuing Students	% Change in New Students	% Change in Total Students
Applied Physics	FT	19		19	11	1	12	-42%	NA	-37%
	PT			0	1		1	NA	NA	NA
Applied Physics Total		19	0	19	12	1	13	-37%	NA	-32%
Biomolecular Sciences	FT	127	1	128	128	1	129	1%	0%	1%
	PT	3		3	7	1	8	133%	NA	167%
Biomolecular Sciences total		130	1	131	135	2	137	4%	100%	5%
Business & Technology Management	FT	211	10	221	205	12	217	-3%	20%	-2%
	PT	5		5	5		5	0%	NA	0%
Business & Technology Management Total		216	10	226	210	12	222	-3%	20%	-2%
Chemical and Biological Engineering	FT	176	1	177	196	2	198	11%	100%	12%
	PT	10		10	4		4	-60%	NA	-60%
Chemical and Biological Engineering Total		186	1	187	200	2	202	8%	100%	8%
Civil Engineering	FT	188	17	205	188	24	212	0%	41%	3%
	PT	4		4	8	2	10	100%	NA	150%
Civil Engineering Total		192	17	209	196	26	222	2%	53%	6%
Computer Engineering	FT	145	23	168	177	44	221	22%	91%	32%
	PT	8	1	9	10		10	25%	-100%	11%
Computer Engineering Total		153	24	177	187	44	231	22%	83%	31%
Computer Science	FT	637	8	645	650	6	656	2%	-25%	2%
	PT	40	1	41	35	1	36	-13%	0%	-12%
Computer Science Total		677	9	686	685	7	692	1%	-22%	1%
Construction Management	FT	2		2			0	-100%	NA	-100%
	PT	1		1			0	-100%	NA	-100%
Construction Management Total		3	0	3	0	0	0	-100%	NA	-100%
Electrical and Computer Engineering	FT	75	11	86	74	10	84	-1%	-9%	-2%
	PT	2		2	2		2	0%	NA	0%
Electrical and Computer Engineering Total		77	11	88	76	10	86	-1%	-9%	-2%
Electrical Engineering	FT	87	8	95	88	9	97	1%	13%	2%
	PT	3		3	8		8	167%	NA	167%
Electrical Engineering Total		90	8	98	96	9	105	7%	13%	7%
Integrated Design and Media	FT	210	6	216	122	6	128	-42%	0%	-41%
	PT	19		19	5	1	6	-74%	NA	-68%
Integrated Design and Media Total		229	6	235	127	7	134	-45%	17%	-43%
Integrated Digital Media	FT	13		13	121		121	831%	NA	831%
	PT	1		1	16		16	1500%	NA	1500%
Integrated Digital Media Total		14	0	14	137	0	137	879%	NA	879%
Mathematics	FT	150	7	157	174	8	182	16%	14%	16%
	PT	6		6	7		7	17%	NA	17%
Mathematics Total		156	7	163	181	8	189	16%	14%	16%
Mathematics & Physics	FT	14		14	13		13	-7%	NA	-7%
	PT	2		2	2		2	0%	NA	0%
Mathematics & Physics Total		16	0	16	15	0	15	-6%	NA	-6%
Mechanical Engineering	FT	395	4	399	372	6	378	-6%	50%	-5%
	PT	18	1	19	17	1	18	-6%	0%	-5%
Mechanical Engineering Total		413	5	418	389	7	396	-6%	40%	-5%
Science and Technology Studies	FT	30		30	18		18	-40%	NA	-40%
	PT	1	1	2	2		2	100%	-100%	0%
Science and Technology Studies Total		31	1	32	20	0	20	-35%	-100%	-38%
Sustainable Urban Environments	FT	46		46	52	1	53	13%	NA	15%
	PT	2		2	3		3	50%	NA	50%
Sustainable Urban Environments Total		48	0	48	55	1	56	15%	NA	17%
Undeclared Major	FT	11		11	8		8	-27%	NA	-27%
	PT			0			0	NA	NA	NA
Undeclared Major Total		11	0	11	8	0	8	-27%	NA	-27%
Total NYU Tandon School of Engineering Undergraduate Enrollment	FT	2536	96	2632	2597	130	2727	2%	35%	4%
	PT	125	4	129	132	6	138	6%	50%	7%
Overall Total		2661	100	2761	2729	136	2865	3%	36%	4%



NYU Tandon Spring Graduate Enrollment Comparison as of February 13, 2022

Calculated_Department Ld	Academic Load	Spring 2021 2/17/2021			Spring 2022 2/13/2022			% Change		
		CON	NEW	Grand Total	CON	NEW	Grand Total	% Change in Continuing Students	% Change in New Students	% Change in Total Students
Center for Urban Science and Progress	FT	34	17	51	129		129	279.4%	-100.0%	152.9%
	PT	19	2	21	15		15	-21.1%	-100.0%	-28.6%
Center for Urban Science and Progress Total		53	19	72	144	0	144	171.7%	-100.0%	100.0%
Dept. of Applied Physics	FT	2	1	3	3		3	50.0%	-100.0%	0.0%
	PT	3	1	4	3		3	0.0%	-100.0%	-25.0%
Dept. of Applied Physics Total		5	2	7	6	0	6	20.0%	-100.0%	-14.3%
Dept. of Biomedical Engineering	FT	19	2	21	46	4	50	142.1%	100.0%	138.1%
	PT	41	7	48	49	12	61	19.5%	71.4%	27.1%
Dept. of Biomedical Engineering Total		60	9	69	95	16	111	58.3%	77.8%	60.9%
Dept. of Chemical & Biomolecular Engineering	FT	55	9	64	117	2	119	112.7%	-77.8%	85.9%
	PT	37		37	26	1	27	-29.7%	NA	-27.0%
Dept. of Chemical & Biomolecular Engineering Total		92	9	101	143	3	146	55.4%	-66.7%	44.6%
Dept. of Civil & Urban Engineering	FT	105	26	131	195	15	210	85.7%	-42.3%	60.3%
	PT	101	3	104	70	7	77	-30.7%	133.3%	-26.0%
Dept. of Civil & Urban Engineering Total		206	29	235	265	22	287	28.6%	-24.1%	22.1%
Dept. of Computer Science & Engineering	FT	230	113	343	615	27	642	167.4%	-76.1%	87.2%
	PT	735	155	890	827	103	930	12.5%	-33.5%	4.5%
Dept. of Computer Science & Engineering Total		965	268	1233	1442	130	1572	49.4%	-51.5%	27.5%
Dept. of Electrical and Computer Engineering	FT	367	92	459	834	38	872	127.2%	-58.7%	90.0%
	PT	324	12	336	223	2	225	-31.2%	-83.3%	-33.0%
Dept. of Electrical and Computer Engineering Total		691	104	795	1057	40	1097	53.0%	-61.5%	38.0%
Dept. of Finance and Risk Engineering	FT	99	1	100	133	1	134	34.3%	0.0%	34.0%
	PT	118		118	80	1	81	-32.2%	NA	-31.4%
Dept. of Finance and Risk Engineering Total		217	1	218	213	2	215	-1.8%	100.0%	-1.4%
Dept. of Mathematics	FT	18		18	36	1	37	100.0%	NA	105.6%
	PT	10		10	13		13	30.0%	NA	30.0%
Dept. of Mathematics Total		28	0	28	49	1	50	75.0%	NA	78.6%
Dept. of Mechanical & Aerospace Engineering	FT	92	10	102	181	7	188	96.7%	-30.0%	84.3%
	PT	62	1	63	45	2	47	-27.4%	100.0%	-25.4%
Dept. of Mechanical & Aerospace Engineering Total		154	11	165	226	9	235	46.8%	-18.2%	42.4%
Dept. of Technology Management & Innovation	FT	297	78	375	448	16	464	50.8%	-79.5%	23.7%
	PT	177	21	198	186	4	190	5.1%	-81.0%	-4.0%
Dept. of Technology Management & Innovation Total		474	99	573	634	20	654	33.8%	-79.8%	14.1%
Dept. of Technology, Culture & Society	FT	42	5	47	73	3	76	73.8%	-40.0%	61.7%
	PT	35	13	48	65	1	66	85.7%	-92.3%	37.5%
Dept. of Technology, Culture & Society Total		77	18	95	138	4	142	79.2%	-77.8%	49.5%
Visitors	FT			0			0	NA	NA	NA
	PT		43	43		8	8	NA	-81.4%	-81.4%
Visitors Total		0	43	43	0	8	8	NA	-81.4%	-81.4%
Total NYU Tandon School of Engineering Graduate Enrollment	FT	1360	354	1714	2810	114	2924	106.6%	-67.8%	70.6%
	PT	1662	258	1920	1602	141	1743	-3.6%	-45.3%	-9.2%
Overall Total		3022	612	3634	4412	255	4667	46.0%	-58.3%	28.4%

* Note: In order to create an accurate comparison for the new addition of the Center for Urban Science and Progress (CUSP) the Spring 20 headcounts were added.

** Note: In order to create an accurate comparison for the new Dept. of Biomedical Engineering the Spring 20 headcounts for Bioinformatics and Biomedical Engineering were reallocated.